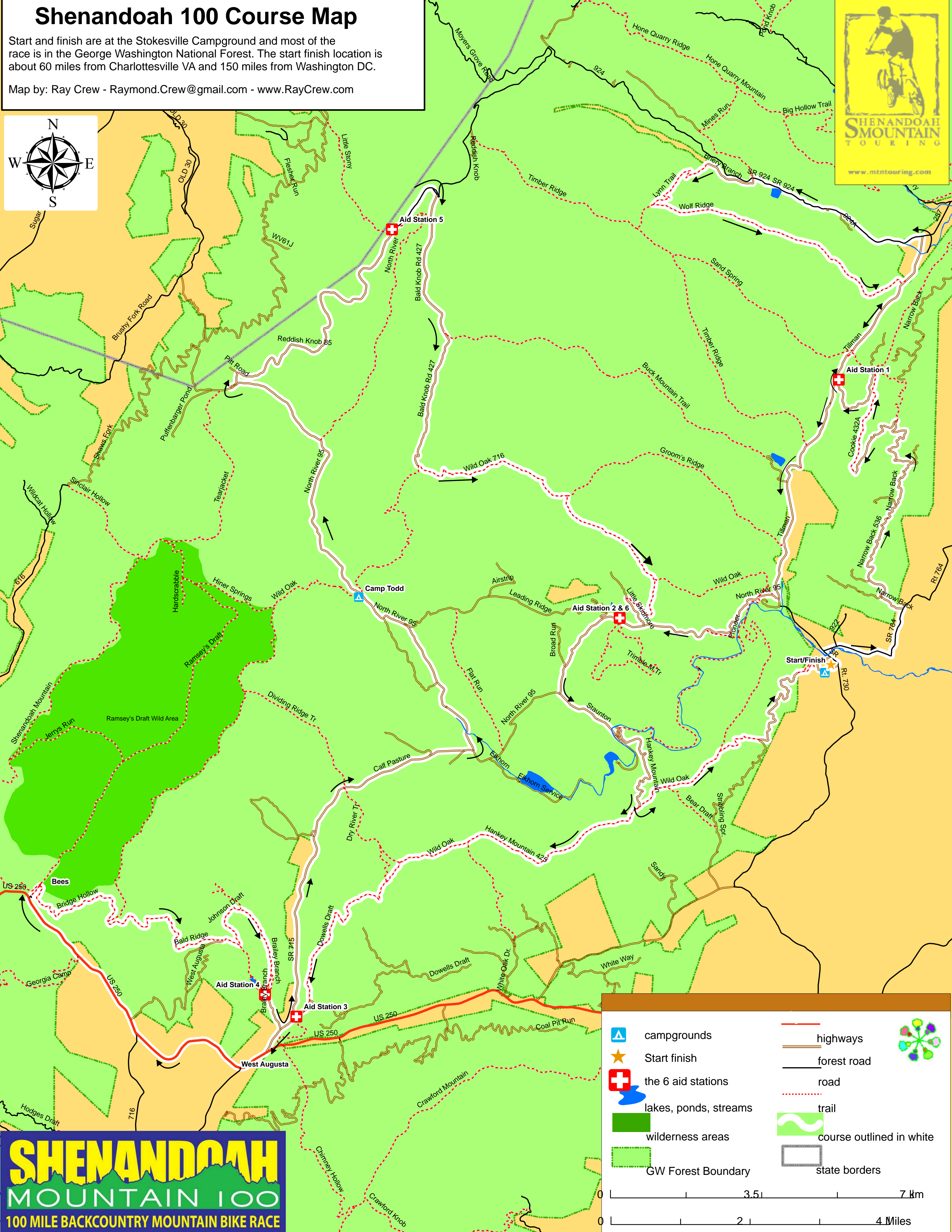
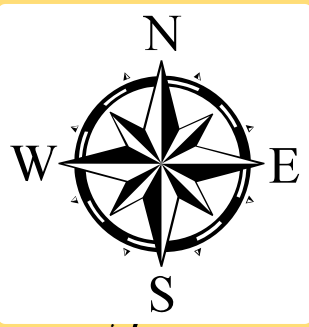


Shenandoah 100 Course Map

Start and finish are at the Stokesville Campground and most of the race is in the George Washington National Forest. The start/finish location is about 60 miles from Charlottesville VA and 150 miles from Washington DC.

Map by: Ray Crew - Raymond.Crew@gmail.com - www.RayCrew.com



	campgrounds		highways
	Start finish		forest road
	the 6 aid stations		road
	lakes, ponds, streams		trail
	wilderness areas		course outlined in white
	GW Forest Boundary		state borders